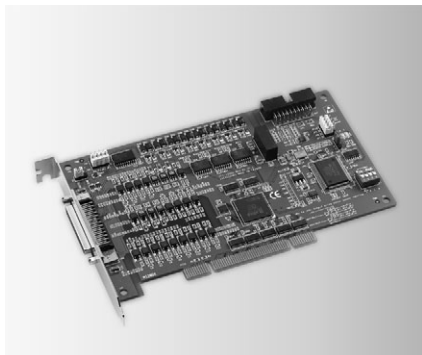
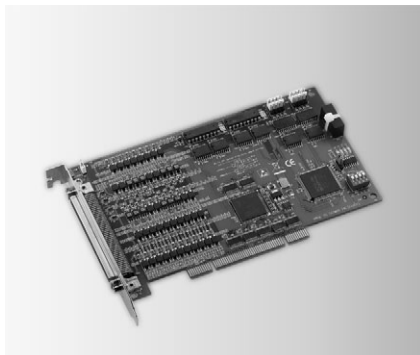


PCI-1220U PCI-1240U PCM-3240

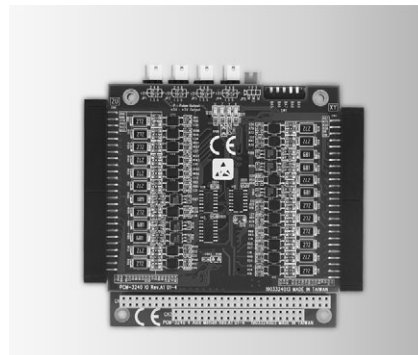
2-axis Stepping and Servo Motor Control Universal PCI Card 4-axis Stepping and Servo Motor Control Universal PCI Card 4-axis Stepping and Servo Motor Control PC/104 Card



PCI-1220U



PCI-1240U



PCM-3240



Specifications

Pulse Type Motion Control

- **Motor Driver Support** Pulse-type servo/stepping
- **Number of Axes** 2
- **Interpolation** 2-axis linear, 2-axis circular
- **Max. Output Speed** 4 Mpps
- **Step Count Range** $\pm 2,147,483,646$ (32 bits)
- **Pulse Output Type** Pulse/direction (1-pulse, 1-direction type) or CW/CCW (2-pulse type)
- **Position Counters** Range of command and actual position
- **Velocity Profiles** T-Curve, S-Curve
- **Local I/O Interfaces** PEL x 2, MEL x 2, ORG x 2
Servo Driver Interfaces: ALM x 2, INP x 2
Position Compare I/O: CMP x 2
General Input: 6 (X_IN0 ~ 2, Y_IN0-2)
General Output: 8 (X_OUT4 ~ 7, Y_OUT4-7)

Encoder Interface

- **Input Type** Quadrature (A/B phase) or up/down
- **Counts /Enc. Cycle** x1, x2, x4 (A/B phase only)
- **Input Range** 0 ~ 2 V_{DC} for low; 5 ~ 30 V_{DC} for high
- **Isolation Protection** 2,500 V_{DC}
- **Max. Input Freq.** 1 MHz

General

- **Bus Type** Universal PCI V2.2
- **Certifications** CE, FCC Class A
- **Connectors** 1 x 50-pin SCSI female connector
- **Dimensions (L x H)** 175 x 100 mm (6.9" x 3.9")
- **Power Consumption** Typical: 5 V @ 850 mA
Max.: 5 V @ 1 A
- **Humidity** 5 ~ 95% RH, non-condensing (IEC 68-2-3)
- **Operating Temp.** 0 ~ 60° C (32 ~ 140° F)
- **Storage Temp.** -20 ~ 85° C (-4 ~ 185° F)

Ordering Information

- **PCI-1220U** 2-axis Stepping and Servo Motor Control PCI Card

Specifications

Pulse Type Motion Control

- **Motor Driver Support** Pulse-type servo/stepping
- **Number of Axes** 4
- **Interpolation** 2-axis linear, 3-axis linear, 2-axis circular
- **Max. Output Speed** 4 Mpps
- **Step Count Range** $\pm 2,147,483,646$
- **Pulse Output Type** Pulse/direction (1-pulse, 1-direction type) or CW/CCW (2-pulse type)
- **Position Counters** Range of command and actual position
- **Velocity Profiles** T-Curve, S-Curve
- **Local I/O Interfaces** PEL x 4, MEL x 4, ORG x 4
Servo Driver Interfaces: ALM x 4, INP x 4
Position Compare I/O: CMP x 4
General Input: 12 (IN0 ~ 2 of each axis)
General Output: 16 (OUT4 ~ 7 of each axis)

Encoder Interface

- **Input Type** Quadrature (A/B phase) or up/down
- **Counts /Enc. Cycle** x1, x2, x4 (A/B phase only)
- **Input Range** 5 ~ 25 V
- **Isolation Protection** 2,500 V_{DC}
- **Max. Input Freq.** 1 MHz

General

- **Bus Type** Universal PCI V2.2
- **Certifications** CE, FCC Class A
- **Connectors** 1 x 100-pin SCSI female connector
- **Dimensions (L x H)** 175 x 100 mm (6.9" x 3.9")
- **Power Consumption** Typical: 5 V @ 850 mA
Max.: 5 V @ 1 A
- **Humidity** 5 ~ 95% RH, non-condensing (IEC 68-2-3)
- **Operating Temp.** 0 ~ 60° C (32 ~ 140° F)
- **Storage Temp.** -20 ~ 85° C (-4 ~ 185° F)

Ordering Information

- **PCI-1240U** 4-axis Servo Motor Control PCI Card

Specifications

Pulse Type Motion Control

- **Motor Driver Support** Pulse-type servo/stepping
- **Number of Axes** 4
- **Interpolation** 2-axis linear, 3-axis linear, 2-axis circular
- **Max. Output Speed** 4 Mpps
- **Step Count Range** $\pm 2,147,483,646$
- **Pulse Output Type** Pulse/direction (1-pulse, 1-direction type), or CW/CCW (2-pulse type)
- **Position Counters** Range of command, range of actual position
- **Velocity Profiles** T-Curve, S-Curve
- **Local I/O Interfaces** PEL x 4, MEL x 4, ORG x 4
Servo Driver Interfaces: ALM x 4, RDY x 4, SVON x 4, INP x 4
Position Compare I/O: CMP x 4
General Input: 12
General Output: 16

Encoder Interface

- **Input Type** Quadrature (A/B phase or up/down)
- **Counts /Enc. Cycle** x1, x2, x4 (A/B phase only)
- **Input Range** 5 ~ 25 V
- **Isolation Protection** 2,500 V_{DC}
- **Max. Input Freq.** 1 MHz

General

- **Bus Type** PC/104
- **Certifications** CE, FCC Class A
- **Connectors** 2 x IDC 50-pin male connector
- **Dimensions (L x H)** 96 x 90 mm (3.8" x 3.5")
- **Power Consumption** Typical: 5 V @ 850 mA
Max.: 5 V @ 1 A
- **Humidity** 5 ~ 95% RH, non-condensing (IEC 68-2-3)
- **Operating Temp.** 0 ~ 60° C (32 ~ 140° F)
- **Storage Temp.** -20 ~ 85° C (-4 ~ 185° F)

Ordering Information

- **PCM-3240** 4-axis Stepping/Servo Motor Control PC/104 Card