

# ITA-2000

Intel® Atom N270 2U Fanless System  
4 x LAN, 18 x COM, PC104+



## Features

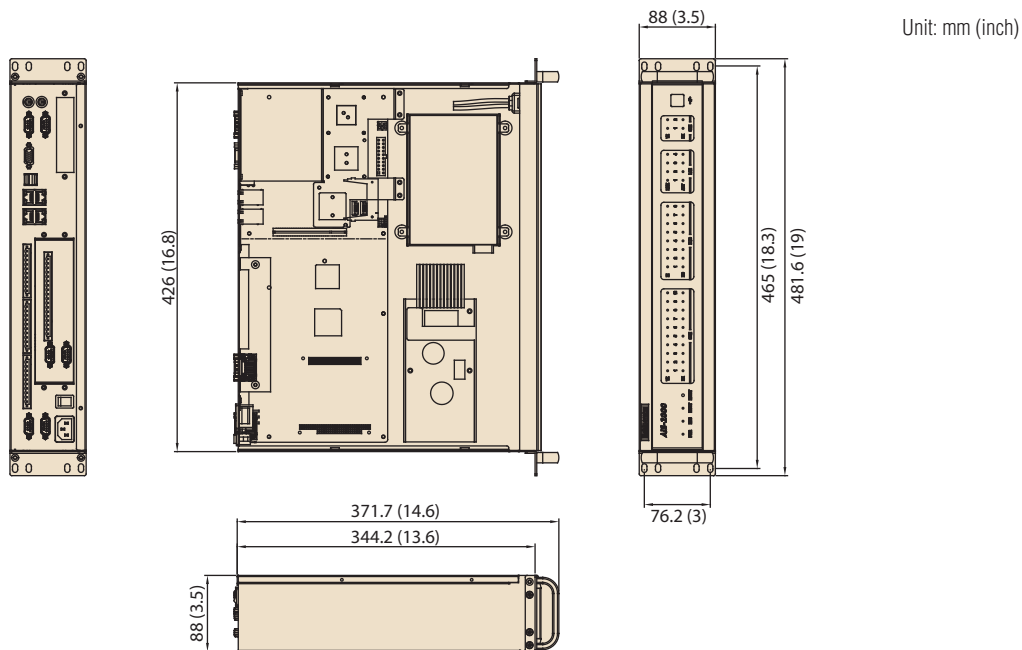
- Intel® AtomN270,1.6GHz CPU
- 2U Fanless System
- 2 x RS232 and up to 16 x RS232/422/485 COM port
- Supports auto flow control and 128byte FIFO
- Up to 8 x 10/100/1000 Base-T Ethernet
- 4 x USB2.0 and 1 x PC104+
- Supports CF card and 2.5" or 3.5" SATA HDD



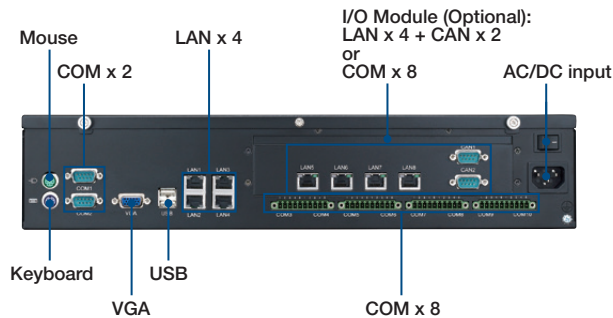
## Specifications

|             |                    |  |
|-------------|--------------------|--|
| Process     | CPU                | Intel Atom N270  |
|             | Max Speed          | 1.6GHz   |
|             | Chipset            | Intel 945GSE/ICH7-M  |
|             | BIOS               | Award 4-Mbit Flash BIOS  |
| Graphic     | Memory             | On board 1G DDR2 533/667 DRAM  |
|             | Chipset            | Intel GMA 950  |
| Ethernet    | Interface          | CRT  |
|             | Controller         | Intel 82574L   |
|             | Interface          | 10/100/1000M Base-T  |
| COM ports   | Connector          | 4 x RJ45 (Optional another 4 x RJ45)   |
|             | Controller         | Oxford OX16PCI954  |
|             | Ports              | Max to 18  |
|             | Connector          | 2ports RS232 with DB9(COM1~2)<br>8 ports RS232/422/485 with Terminal Block (COM3~10 w/2KV <sub>DC</sub> isolation)<br>8 ports RS232/422/485 with Terminal Block (COM11~18 w/2KV <sub>DC</sub> isolation, Optional) |
| Others      | Speed              | 50~115.2kbps   |
|             | Watch Dog          | 255 levels set by software   |
|             | PS/2               | 1 x Keyboard/Mouse   |
|             | USB2.0             | 4 x USB ports (Front x 2, Rear x 2)  |
|             | PC104+             | 1  |
|             | CAN(Optional)      | CAN 2.0B (Controller: SJA-1000)  |
| Storage     | DIO(Optional)      | 16bit DI/O   |
|             | HDD                | 1 x Bracket for 2.5" or 3.5" HDD   |
| PSU         | CF                 | 1 x CF socket for Type I/II CF   |
|             | Input Voltage      | AC100 ~ 240V, DC 110 ~ 220V  |
| Environment | Output Power       | 120 W  |
|             | Operating Temp     | 0 ~ 45° C  |
|             | Operating Humidity | 95% @ 40° C  |
|             | Vibration          | With CF: 5Grms, IEC 60068-2-64,5~500Hz, 10ct./min,1hr/axis   |
| Mechanical  | Shock              | With CF: 50Grms, IEC 60068-2-27, half-sine, 11ms   |
|             | Dimension          | 482 x 88 x 350 mm(19" x 3.46" x 12.8")   |
|             | Weight             | 9.2 kg (20.24 lb)  |

## Dimensions



## Internal structure



## Order Information

| Part Number    | Description  |
|----------------|--|
| ITA-2000-00A2E | Intel Atom N270 processor 1.6GHz, 1GB DDR2 SDRAM, 10 x Series port, 4 x LAN          |
| ITA-2000-01A2E | Intel Atom N270 processor 1.6GHz, 1GB DDR2 SDRAM, 18 x Series port, 4 x LAN, 2 x CAN |

## Package List

| Part Number | Description                      | Quantity       |
|-------------|----------------------------------|----------------|
| 2062200001  | Driver CD                        | 1              |
| 1700014518  | SATA cable (7pin, 180D w/lock)   | 1              |
| 1652005141  | TERMINAL BLOCK 10P 3.81mm Female | 4/8 (optional) |